

Freshman Student Handbook

UCI
School of Social Sciences

Table of Contents

Social Sciences Undergraduate	
Student Affairs (SSUSA)	5
Freshman Year Schedule with Writing Component	6
Freshman Year Schedule without Writing Component (in Fall)	10

GETTING STARTED

What is a UCInetID?	16
UCI Email	16
Preferred Name	16
E-mail Etiquette.....	16
Schedule of Classes (WebSOC)	17
Key Terms	17
Class Registration (WebReg).....	18
Video Tutorial	18
Enrollment Window	18
Enrollment Menu	19
Waiting List Menu	20
Student Billing System	20
Billing Statement.....	20
PACE Payment Plan (Installment Payments)	20
For New Students.....	21
For Students with Financial Aid	21
Health Insurance	21
Student Access.....	21
DegreeWorks	21

SOCIAL SCIENCES REQUIREMENTS

University Requirements	22
-------------------------------	----

School of Social Sciences Requirements	22
General Education Requirements	23
What can I do with a Social Sciences major?	25
Change of Major Requirements.....	26
Minors	28
Certificates	29
Transfer Units.....	29
ASSIST	29
College Board Advanced Placement Exam and International Baccalaureate Exams	30

SCHOOL POLICIES

Student Affairs Office Functions	31
Dean's Signature	31
Study Abroad Advising	31
Academic Probation/Contract.....	32
Academic Dishonesty	32
Withdrawal	33
Readmission	33
Part-Time Student Status	33
Add/Drop/Change Policies	34
Retake Policy	34
Transcript Notations	34
Petitions.....	35
Prerequisite Clearance	35

STUDENT RESOURCES

Student Resources List	36
------------------------------	----



Social Sciences Undergraduate Student Affairs Office

<http://www.undergrad.socsci.uci.edu/studentaffairs.php>

HOURS OF OPERATION

Monday - Friday
8:00 am - 12:00 pm and 1:00 pm - 4:00 pm
1201 Social & Behavioral Sciences Gateway
Irvine, CA 92697-5100

✉ E-mail: socsci@uci.edu

☎ Phone: (949) 824-6803

☎ Fax: (949) 824-2492

OFFICE STAFF

Academic Counselors:

- Helen Morgan, *Director*
- Chika Kono, *Associate Director*
- Estela Magaña
- Kurt Hessinger
- Katrina Tomas
- Michelle Doan
- Zoey Xiong
- Cassie Zhang

Along with 10 Peer Academic Advisors

SCHOOL MAJORS AND MINORS

Majors with an asterisk () also offer a minor*

- Anthropology*
- Chicano/Latino Studies*
- Cognitive Sciences (B.S.)
- Business Economics
- Economics*
- Quantitative Economics
- International Studies*
- Political Science*
- Psychology*
- Social Policy & Public Service
- Sociology*

OFFERED AS MINORS ONLY

- Conflict Resolution
- Hearing & Speech Sciences
- Linguistics
- Medical Anthropology

Freshman Year Schedule

with Writing Component



All freshmen should take Social Sciences 3A (Computer Based Research in the Social Sciences) during their first year, regardless of major.

The School of Social Sciences' mathematics requirement should be completed during the second year (Anthropology 10A-B-C or Economics 15A-B or Psychology 10A-B-C or Sociology 10A-B-C or Social Science 10A-B-C), and they must be taken for a grade.

We strongly encourage students to finish the foreign language requirement as soon as possible if you still

need to take more classes (you must take the placement exam for all languages - except French and German).

UC Entry Level Writing requirement must be satisfied before the beginning of your fourth quarter of enrollment. Any course used to satisfy the UC Entry Level Writing requirement must be taken for a grade. Lower-division writing must be completed before the beginning of your seventh quarter of enrollment.

SAMPLE COURSE SCHEDULE BY MAJOR

Anthropology

Fall: 12-14 units	Winter: 16 units	Spring: 16 units
*Hum Core 1A = 8-10 units	*Hum Core 1B	*Hum Core 1C
Anthropology 2A = 4 units	Anthropology 2B, 2C, or 2D	Soc Sci Introductory Course
	Anth 30A/30B or General Ed (GE) or Soc Sci 3A	Anth 30A/30B or General Ed or Soc Sci 3A

-or-

Writing 39A or 37 = 4-6 units	Writing 39B	Writing 39C
Anthropology 2A = 4 units	Anthropology 2B, 2C, or 2D	Soc Sci Introductory Course
General Education or Elective = 4 units	Anth 30A/30B or General Ed (GE) or Soc Sci 3A	Anth 30A/30B or General Ed or Soc Sci 3A
	General Education or Elective	General Education or Elective

Chicano/Latino Studies

Fall: 12-14 units	Winter: 16 units	Spring: 16 units
*Hum Core 1A = 8-10 units	*Hum Core 1B	*Hum Core 1C
Chc/Lat Studies 61 = 4 units	Chc/Lat Studies 62	Chc/Lat Studies 63
	General Education or Soc Sci 3A	General Education or Soc Sci 3A

-or-

Writing 39A or 37 = 4-6 units	Writing 39B	Writing 39C
Chc/Lat Studies 61 = 4 units	Chc/Lat Studies 62	Chc/Lat Studies 63
General Education or Elective = 4 units	General Education or Soc Sci 3A	General Education or Soc Sci 3A
	General Education or Elective	General Education or Elective

Economics (includes Business Economics, Economics, and Quantitative Economics)¹

Fall: 12-14 units	Winter: 16 units	Spring: 16 units
*Hum Core 1A = 8-10 units	*Hum Core 1B	*Hum Core 1C
Math 2A	Math 2B	Math 4
	Econ 20A	Econ 20B

-or-

Writing 39A or 37 = 4-6 units	Writing 39B	Writing 39C
Econ 20A = 4 units	Econ 20B	Math 4
Math 2A = 4 units	Math 2B	Lower-Division Econ
	Soc Sci 3A or Soc Sci Intro Course or General Education	Soc Sci 3A or Soc Sci Intro Course or General Education

International Studies²

Fall: 12-14 units	Winter: 16 units	Spring: 16 units
*Hum Core 1A = 8-10 units	*Hum Core 1B	*Hum Core 1C
International Studies 11 = 4 units	International Studies 14	International Studies 13
	Soc Sci 3A or Language or General Ed	Soc Sci 3A or Language or General Education

-or-

Writing 39A or 37 = 4-6 units	Writing 39B	Writing 39C
Int'l Studies 11 = 4 units	International Studies 14	Int'l Studies 13
General Ed or Elective or Language = 4-5 units	Soc Sci 3A or General Education	Soc Sci 3A or General Education
	General Education or Elective or Language	General Education or Elective or Language

Political Science

Fall: 12-14 units	Winter: 16 units	Spring: 16 units
*Hum Core 1A = 8-10 units	*Hum Core 1B	*Hum Core 1C
Lower-Division Political Science = 4 units	Lower-Division Political Science	Lower-Division Political Science
	General Education or Soc Sci 3A	General Education or Soc Sci 3A

-or-

Writing 39A or 37 = 4-6 units	Writing 39B	Writing 39C
Lower-Division Political Science = 4 units	Lower-Division Political Science	Lower-Division Political Science
General Education or Elective = 4 units	General Education or Soc Sci 3A	General Education or Soc Sci 3A
	General Education or Elective	General Education or Elective

Social Policy and Public Service³

Fall: 12-14 units	Winter: 16 units	Spring: 16 units
*Hum Core 1A = 8-10 units	*Hum Core 1B	*Hum Core 1C
Social Science 2A = 4 units	Social Science 1A	Social Science 3A
	Social Science 40 or General Ed	Social Science 70C/Sociology 63 or General Ed

-or-

Writing 39A or 37 = 4-6 units	Writing 39B	Writing 39C
Social Science 2A = 4 units	Social Science 1A	Social Science 3A
General Ed Course = 4 units	Social Science 40	Social Science 70C or Sociology 63
	General Ed	General Ed

Sociology

Fall: 12-14 units	Winter: 16 units	Spring: 16 units
*Hum Core 1A = 8-10 units	*Hum Core 1B	*Hum Core 1C
Sociology 1 = 4 units	Sociology 2 or 3	Lower division Sociology course
	Soc Sci 3A or General Ed	Soc Sci 3A or General Ed

-or-

Writing 39A or 37 = 4-6 units	Writing 39B	Writing 39C
Sociology 1 = 4 units	Sociology 2 or 3	Lower division Sociology course
General Ed or lower division Sociology course = 4 units	Soc Sci 3A or General Ed	Soc Sci 3A or General Ed
	Introductory Course or elective	General Ed or elective

Psychology⁴

Fall: 12-14 units	Winter: 16 units	Spring: 16 units
*Hum Core 1A = 8-10 units	*Hum Core 1B	*Hum Core 1C
Psych 9A/B/C= 4 units	Psych 9A/B/C	Psych 9A/B/C
	Soc Sci Intro or General Ed or Computer Tech	Soc Sci Intro or General Ed or Computer Tech

-or-

Writing 39A or 37 = 4-6 units	Writing 39B	Writing 39C
Psych 9A/B/C = 4 units	Psych 9A/B/C	Psych 9A/B/C
General Ed or Soc Sci Intro Course = 4 units	Soc Sci Intro Course	Soc Sci Intro Course or Breath
	* Computer Tech or General Ed	* Computer Tech or General Ed

Cognitive Sciences (B.S.)⁵

Fall: 14-18 units	Winter: 16-20 units	Spring: 16 units
*Hum Core 1A = 8-10 units	*Hum Core 1B	*Hum Core 1C
Psych 9A/B/C = 4 units	Psych 9A/B/C	Psych 9A/B/C
Math 2A = 4 units	Math 2B	Stats 7
	CogS 109	

-or-

Writing 39A or 37 = 4-6 units	Writing 39B	Writing 39C
Psych 9A/B/C = 4 units	Psych 9A/B/C	Psych 9A/B/C
Math 2A = 4 units	Math 2B	Stats 7
	CogS 109	Major elective or General Ed

1. Economics majors must not enroll in Economics 1 (for non-majors), you will NOT receive credit.
2. International Studies majors are especially encouraged to start the foreign language requirement (up to 2B or equivalent) as soon as possible. All languages (except French and German) require a placement exam.
3. Social Policy & Public Service majors must take Social Science 3A for a letter grade only and it should be completed in their first year.
4. Psychology and Cognitive Sciences majors must not enroll in Psychology 7A (for non-majors), you will NOT receive credit.
5. Cognitive Sciences majors must take either ICS 31 or Psych 114M to satisfy the Computer Technology Requirement.

*** Humanities core must be taken with the appropriate writing seminar component.**

Freshman Year Schedule

without Writing Component



All freshmen should take Social Sciences 3A (Computer Based Research in the Social Sciences) during their first year, regardless of major.

The School of Social Sciences' mathematics requirement should be completed during the second year (Anthropology 10A-B-C or Economics 15A-B or Psychology 10A-B-C or Sociology 10A-B-C or Social Science 10A-B-C), and they must be taken for a grade.

We strongly encourage students to finish the foreign language requirement as soon as possible if you still need to take more classes (you must take the placement exam for all languages-except French and German).

UC Entry Level Writing requirement must be satisfied before the beginning of your fourth quarter of enrollment. Any course used to satisfy the UC Entry Level Writing requirement must be taken for a grade.

SAMPLE COURSE SCHEDULE BY MAJOR

Anthropology

Fall: 12-14 units	Winter: 16 units	Spring: 16 units
General Ed (Cat II, IV, VII) = 4 units	Writing 39A or 39B	Writing 39B or 39C
Anthropology 2A = 4 units	Anthropology 2B, 2C, or 2D	Soc Sci Introductory Course
General Education or Elective	Anth 30A/30B or Soc Sci 3A	Anth 30A/30B or Soc Sci 3A
	General Education or Elective	General Education or Elective

Chicano/Latino Studies

Fall: 12 units	Winter: 16 units	Spring: 16 units
General Ed (Cat II, IV, VII) = 4 units	Writing 39A or 39B	Writing 39B or 39C
Chc/Lat Studies 61 = 4 units	Chc/Lat Studies 62	Chc/Lat Studies 63
General Education or Elective = 4 units	General Education or Soc Sci 3A	General Education or Soc Sci 3A
	General Education or Elective	General Education or Elective

Economics (includes Business Economics, Economics, and Quantitative Economics)¹

Fall: 12 units	Winter: 16 units	Spring: 16 units
General Ed (Cat II, IV, VII) = 4 units	Writing 39A or 39B	Writing 39B or 39C
Econ 20A = 4 units	Econ 20B	Math 4
Math 2A = 4 Units	Math 2B	Lower-Division Econ
	Soc Sci 3A or Soc Sci Intro Course or General Education	Soc Sci 3A or Soc Sci Intro Course or General Education

International Studies²

Fall: 12-13 units	Winter: 16 units	Spring: 16 units
General Ed (Cat II, IV, VII) = 4 units	Writing 39A or 39B	Writing 39B or 39C
International Studies 11 = 4 units	International Studies 14	International Studies 13
General Ed or Language = 4-5 units	Soc Sci 3A or General Education	Soc Sci 3A or General Education
	General Ed or Elective or Language	General Ed or Elective or Language

Political Science

Fall: 12 units	Winter: 16 units	Spring: 16 units
General Ed (Cat II, IV, VII) = 4 units	Writing 39A or 39B	Writing 39B or 39C
Lower-Division Political Science = 4 units	Lower-Division Political Science	Lower-Division Political Science
General Education or Elective = 4 units	Soc Sci 3A or General Education	Soc Sci 3A or General Education
	General Education or Elective	General Education or Elective

Social Policy and Public Service³

Fall: 12 units	Winter: 16 units	Spring: 16 units
General Ed (Cat II, IV, VII) = 4 units	Writing 39A or 39B	Writing 39B or 39C
Social Science 2A = 4 units	Social Science 1A	Social Science 3A
General Ed = 4 units	Social Science 40	Social Science 70C or Sociology 63
	General Ed	General Ed

Sociology

Fall: 12 units	Winter: 16 units	Spring: 16 units
General Ed (Cat II, IV, VII) = 4 units	Writing 39A or 39B	Writing 39B or 39C
Sociology 1 = 4 units	Sociology 2 or 3	Lower division Sociology course
Lower division Sociology course or General Ed = 4 units	Soc Sci 3A or General Ed	Soc Sci 3A or General Ed
	Introductory Course or elective	General Ed or elective

Psychology⁴

Fall: 12 units	Winter: 16 units	Spring: 16 units
General Ed (Cat II, IV, VII) = 4 units	Writing 39A or 39B	Writing 39B or 39C
Psych 9A/B/C = 4 units	Psych 9A/B/C	Psych 9A/B/C
General Ed or Soc Sci Intro Course = 4 units	Soc Sci Intro Course	Soc Sci Intro Course or General Ed
	* Computer Tech or General Ed	* Computer Tech or General Ed

Cognitive Sciences (B.S.)⁵

Fall: 12 units	Winter: 16 units	Spring: 16 units
Psych 9A/B/C = 4 units	Writing 39A or 39B	Writing 39B or 39C
Math 2A = 4 units	Psych 9A/B/C	Psych 9A/B/C
BioSci 35 = 4 units	Math 2B	Stats 7
	CogS 109	Major elective or General Ed

1. Economics majors must not enroll in Economics 1 (for-non majors), you will **NOT** receive credit.
2. International Studies majors are encouraged to take language (up to 2B or equivalent) as soon as possible. All languages (except French and German) require a placement exam.
3. Social Policy & Public Service majors must take Social Science 3A for a letter grade only and it should be completed in their first year.
4. Psychology and Cognitive Sciences majors must not enroll in Psychology 7A (for non-majors), you will NOT receive credit.
5. Cognitive Sciences majors must take ICS 31 or Psych 114M to satisfy the computer technology requirement.



Freshman Year Schedule

without Writing Component



All freshmen should take Social Sciences 3A (Computer Based Research in the Social Sciences) during their first year, regardless of major.

The School of Social Sciences' mathematics requirement should be completed during the second year (Anthropology 10A-B-C or Economics 15A-B or Psychology 10A-B-C or Sociology 10A-B-C or Social Science 10A-B-C), and they must be taken for a grade.

We strongly encourage students to finish the foreign language requirement as soon as possible if you still need to take more classes (you must take the placement exam for all languages-except French and German).

UC Entry Level Writing requirement must be satisfied before the beginning of your fourth quarter of enrollment. Any course used to satisfy the UC Entry Level Writing requirement must be taken for a grade.

SAMPLE COURSE SCHEDULE BY MAJOR

Anthropology

Fall: 12-14 units	Winter: 16 units	Spring: 16 units
General Ed (Cat II, IV, VII) = 4 units	Writing 39A or 39B	Writing 39B or 39C
Anthropology 2A = 4 units	Anthropology 2B, 2C, or 2D	Soc Sci Introductory Course
General Education or Elective	Anth 30A/30B or Soc Sci 3A	Anth 30A/30B or Soc Sci 3A
	General Education or Elective	General Education or Elective

Chicano/Latino Studies

Fall: 12 units	Winter: 16 units	Spring: 16 units
General Ed (Cat II, IV, VII) = 4 units	Writing 39A or 39B	Writing 39B or 39C
Chc/Lat Studies 61 = 4 units	Chc/Lat Studies 62	Chc/Lat Studies 63
General Education or Elective = 4 units	General Education or Soc Sci 3A	General Education or Soc Sci 3A
	General Education or Elective	General Education or Elective

Economics (includes Business Economics, Economics, and Quantitative Economics)¹

Fall: 12 units	Winter: 16 units	Spring: 16 units
General Ed (Cat II, IV, VII) = 4 units	Writing 39A or 39B	Writing 39B or 39C
Econ 20A = 4 units	Econ 20B	Math 4
Math 2A = 4 Units	Math 2B	Lower-Division Econ
	Soc Sci 3A or Soc Sci Intro Course or General Education	Soc Sci 3A or Soc Sci Intro Course or General Education

International Studies²

Fall: 12-13 units	Winter: 16 units	Spring: 16 units
General Ed (Cat II, IV, VII) = 4 units	Writing 39A or 39B	Writing 39B or 39C
International Studies 11 = 4 units	International Studies 14	International Studies 13
General Ed or Language = 4-5 units	Soc Sci 3A or General Education	Soc Sci 3A or General Education
	General Ed or Elective or Language	General Ed or Elective or Language

Political Science

Fall: 12 units	Winter: 16 units	Spring: 16 units
General Ed (Cat II, IV, VII) = 4 units	Writing 39A or 39B	Writing 39B or 39C
Lower-Division Political Science = 4 units	Lower-Division Political Science	Lower-Division Political Science
General Education or Elective = 4 units	Soc Sci 3A or General Education	Soc Sci 3A or General Education
	General Education or Elective	General Education or Elective

Social Policy and Public Service³

Fall: 12 units	Winter: 16 units	Spring: 16 units
General Ed (Cat II, IV, VII) = 4 units	Writing 39A or 39B	Writing 39B or 39C
Social Science 2A = 4 units	Social Science 1A	Social Science 3A
General Ed = 4 units	Social Science 40	Social Science 70C or Sociology 63
	General Ed	General Ed

Sociology

Fall: 12 units	Winter: 16 units	Spring: 16 units
General Ed (Cat II, IV, VII) = 4 units	Writing 39A or 39B	Writing 39B or 39C
Sociology 1 = 4 units	Sociology 2 or 3	Lower division Sociology course
Lower division Sociology course or General Ed = 4 units	Soc Sci 3A or General Ed	Soc Sci 3A or General Ed
	Introductory Course or elective	General Ed or elective

Psychology⁴

Fall: 12 units	Winter: 16 units	Spring: 16 units
General Ed (Cat II, IV, VII) = 4 units	Writing 39A or 39B	Writing 39B or 39C
Psych 9A/B/C = 4 units	Psych 9A/B/C	Psych 9A/B/C
General Ed or Soc Sci Intro Course = 4 units	Soc Sci Intro Course	Soc Sci Intro Course or General Ed
	* Computer Tech or General Ed	* Computer Tech or General Ed

Cognitive Sciences (B.S.)⁵

Fall: 12 units	Winter: 16 units	Spring: 16 units
Psych 9A/B/C = 4 units	Writing 39A or 39B	Writing 39B or 39C
Math 2A = 4 units	Psych 9A/B/C	Psych 9A/B/C
BioSci 35 = 4 units	Math 2B	Stats 7
	CogS 109	Major elective or General Ed

1. Economics majors must not enroll in Economics 1 (for-non majors), you will **NOT** receive credit.
2. International Studies majors are encouraged to take language (up to 2B or equivalent) as soon as possible. All languages (except French and German) require a placement exam.
3. Social Policy & Public Service majors must take Social Science 3A for a letter grade only and it should be completed in their first year.
4. Psychology and Cognitive Sciences majors must not enroll in Psychology 7A (for non-majors), you will NOT receive credit.
5. Cognitive Sciences majors must take ICS 31 or Psych 114M to satisfy the computer technology requirement.



What is a UCI NetID?

Your UCI NetID is your key to online services at the University of California, Irvine. Many online services, including Webmail, WebReg, EEE, and numerous others, require you to use your UCI NetID and password in order to log in.

Your UCI NetID is for your individual use only. Do not share your password with anyone.

Activate your UCI NetID:

🌐 <http://activate.uci.edu/activate/menu.html>

- You will need your Student ID number (8 digits), date of birth, and the last 4 digits of your Social Security number.

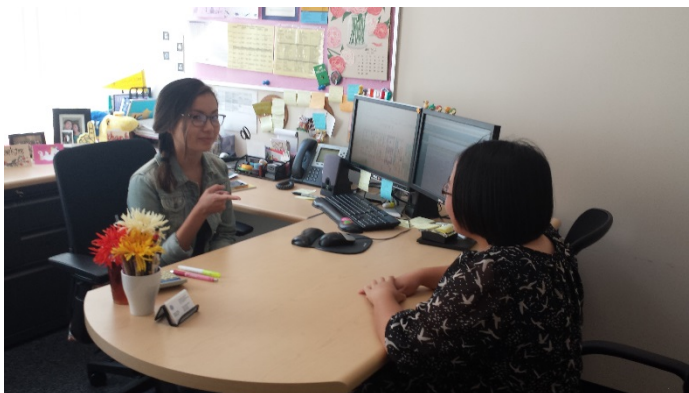
Gmail (E-mail)

To access your UCI email account, you must first activate your UCI NetID. Note that all official notices and emails will be sent to this email address.

- 🌐 <http://www.google.uci.edu/email.html>
- Login with your UCI NetID and password.

Preferred Name

A preferred name is a name that you choose to be used in place of your legal name on certain university related records and documents. It is how you can be referred to on the campus directory, on class rosters, on your UCI ID card, and on EEE. To set a preferred name, you can use Student Access -> Applications -> Preferred Name and follow the directions to set this.



E-mail Etiquette

Here are some tips on how to use email most effectively to communicate with academic counselors (and other UCI personnel).

1. Use your UCI email address (for UCI correspondence). To protect your privacy, many UCI offices will only respond to messages from UCI e-mail accounts.
2. Identify yourself. When you send an email to an academic counselor, be sure to include your **FULL-NAME**, your **MAJOR**, and your **UCI ID NUMBER**. We need to know who we are talking to in order to give you accurate information.
3. Be considerate. Do not send the same question to more than one person in an office. There's no reason for three or four different people to answer the same question!
4. Check your email regularly. Lots of important information (some of it essential to your success as a student) will be sent by professors, academic counselors, and other UCI personnel. YOU are responsible for reading all official UCI emails sent to your account, and YOU will suffer the consequences if you miss important messages.
5. Be clear and concise. Try to keep email messages brief.
6. Be flexible. Some advising issues really need to be handled in person. Do not be offended if we ask you to make an appointment to discuss your questions—we do this to avoid wasting your time and ours with back-and-forth questions and answers that could be handled more quickly in person.
7. Delete unwanted/old messages. If you do not read your UCI email regularly and clear out old messages and spam, your inbox will fill up and important email messages may be returned and undelivered.
8. Be professional. Treat emails as a formal communication—do not use text messaging abbreviations, slang, four-letter words, etc. if you want to be taken seriously. Watch your grammar, spelling, etc.
9. Be nice. Keep the tone of your email civil. It is very easy for us (and your professors) to forward email and to print it off and put it in your file—it is not anonymous. **DO NOT WRITE YOUR EMAIL MESSAGES IN ALL CAPITAL LETTERS.** This is incredibly annoying and is often perceived as being hostile or confrontational.
10. Be patient. Sometimes you may get a response immediately, while at other times it may take a few days

since we are often very busy. If you are really in a hurry to get an answer, drop by or call the office.

Schedule of Classes (WebSOC)

- Schedule of Classes is accessible from <http://www.reg.uci.edu>. Available online in Week 6 for the upcoming academic quarter.
- To find:
 - ✓ Major courses: Select appropriate department, then click “Display Web Results”
 - ✓ General Education courses: Select GE category, then click “Display Web Results”

- When selecting courses, pay attention to times, dates, and places. Also write down the 5 digit code which you will need to register through WebReg.

When there are different types of courses listed under the “Type” column, you must enroll in one of each type to maintain your enrollment in the course. Note if there is more than one lecture offered, you must select the corresponding co-class to enroll (See picture below).

Soc Sci 3A COMP RES IN SOC SCI																
Code	Type	Sec	Units	Instructor	Time	Place	Final	Max	Enr	WL	Req	Nor	Rstr	Textbooks	Web	Status
70100	Lec	A	4	HULL, J.	TuTh 3:30- 4:50p	BSS 1200	Tue, Dec 16, 4:00-6:00pm	376	0	n/a	0	0		Bookstore		OPEN
70101	Lab	1	0	STAFF HULL, J.	WF 2:00- 3:20p	SBSG 1241		46	0	n/a	0	0		Bookstore		OPEN
70102	Lab	2	0	STAFF HULL, J.	TuTh 5:00- 6:20p	SBSG 1241										
70103	Lab	3	0	STAFF HULL, J.	TuTh 6:30- 7:50p	SBSG 1241										
70104	Lab	4	0	STAFF HULL, J.	WF 5:00- 6:20p	SBSG 1241										
70105	Lab	5	0	STAFF HULL, J.	WF 11:00-12:20p	SBSG 1241										
70106	Lab	6	0	STAFF HULL, J.	WF 9:30-10:50	SBSG 1241										
70107	Lab	7	0	STAFF HULL, J.	WF 3:30- 4:50p	SBSG 1241										
70108	Lab	8	0	STAFF HULL, J.	WF 12:30- 1:50p	SBSG 1241										
70109	Lab	9	0	STAFF HULL, J.	WF 8:00- 9:20	SBSG 1241		48	0	n/a	0	0		Bookstore		OPEN
70120	Lec	B	4	SHIREY, P.	MWF 2:00- 2:50p	SSLH 100	Fri, Dec 19, 1:30-3:30pm	372	0	n/a	0	0		Bookstore		OPEN
70121	Lab	1	0	STAFF SHIREY, P.	TuTh 11:00-12:20p	SBSG 1241		45	0	n/a	0	0		Bookstore		OPEN
70122	Lab	2	0	STAFF SHIREY, P.	TuTh 3:30- 4:50p	SBSG 1241		45	0	n/a	0	0		Bookstore		OPEN
70123	Lab	3	0	STAFF SHIREY, P.	WF 11:00-12:20p	SBSG 241		33	0	n/a	0	0		Bookstore		OPEN
70124	Lab	4	0	STAFF SHIREY, P.	WF 8:00- 9:20	SBSG 241		45	0	n/a	0	0		Bookstore		OPEN
70125	Lab	5	0	STAFF SHIREY, P.	TuTh 2:00- 3:20p	SBSG 1241		45	0	n/a	0	0		Bookstore		OPEN
70126	Lab	6	0	STAFF SHIREY, P.	MW 6:30- 7:50p	SBSG 1241		45	0	n/a	0	0		Bookstore		OPEN
70127	Lab	7	0	STAFF SHIREY, P.	TuTh 9:30-10:50	SBSG 1241		45	0	n/a	0	0		Bookstore		OPEN
70128	Lab	8	0	STAFF SHIREY, P.	TuTh 12:30- 1:50p	SBSG 1241		45	0	n/a	0	0		Bookstore		OPEN
70129	Lab	9	0	STAFF SHIREY, P.	WF 9:30-10:50	SBSG 241		24	0	n/a	0	0		Bookstore		OPEN

NOTE: Lecture A (code 70100) has the labs listed from A1-A9 (codes 70101-70109). An attempt to enroll in lecture A, but in a lab for Lecture B, code 70129 will result in the message “**CO CLASS MISMATCH**”. You will be dropped from the class once you log out of WebReg, if fail to correct the enrollment error.

Key Terms

- ✓ Open: Class is open to all students who meet the prerequisites (if any)
- ✓ Waitlist: The maximum class enrollment has been reached but students may waitlist the course so that if any currently enrolled student drops the course, the waitlisted students will be automatically enrolled.
- ✓ Full: Enrollment and waitlist positions are full. Student cannot electronically enroll in the course.

- Column Definitions, Building Abbreviations, Restriction Codes, and Campus Map are conveniently located at the bottom of each WebSoc results page.

Class Registration (WebReg)

WebReg is accessible from <http://www.reg.uci.edu>. UCInetID and password required. Use WebReg to enroll in classes and make schedule changes during the registration period and the adjustment period. WebReg is available from 6:00 AM to 4:00 AM. daily, with occasional down times for special circumstances such as final grade update.

After logging in with UCInetID and password, you should see this Menu.

 **Video Tutorial:** <http://www.youtube.com/watch?v=lzOLwzxCxG0&feature=youtu.be>

WEBREG UNIVERSITY REGISTRAR UNIVERSITY of CALIFORNIA • IRVINE

Search Registrar site: [GO»](#)

UCI Home
Schedule of Classes
WebReg
StudentAccess
Site Index

FALL Quarter Menu

Logout

Enrollment Menu	Add, drop, or change your course enrollment.
Wait list Menu	Add or drop courses on the Wait List.

Enrollment Information

Enrollment Window	Display the date and time you can first enroll through WebReg.
Fee Status	Display whether your fees have been received.
Study List	Display your class schedule.

UNIVERSITY REGISTRAR
 registrar@uci.edu • ph: (949) 824-6124 • fax: (949) 824-7896
 University of California, Irvine • 215 Aldrich Hall • Irvine, CA 92697-4975
 © 2007 The Regents of the University of California. All Rights Reserved.

Enrollment Window

(Viewable Monday of Week 7 for upcoming academic quarter)

- Indicates first time you are allowed to enroll in courses.
- When your Enrollment Window opens, you have continuous access to the Enrollment Menu for the next 48 hours.
- After the 48 hours, you may only access WebReg between the hours of 7:00 PM to 7:00 AM.

Fee Status

- Indicates the last day fees are due and whether you have paid them.

Note: *if you fail to pay by the deadline, you will be dropped from all of your classes.*

Study List

- Displays courses currently enrolled in.



Enrollment Menu

Enrollment Menu

[Logout](#)

[Show Study List](#)

[Go to Wait List Menu](#)

[Return to Main Menu](#)

[Send Request](#)

[Reset](#)

Request	Course Code	Grade Option	Variable Units	Authorization Code
<input checked="" type="radio"/> Add <input type="radio"/> Change	<input type="text" value="44215"/>	<input type="checkbox"/> 1=Grade, 2=P/NP	<input type="text"/>	<input type="text"/>
<input type="radio"/> Drop <input type="radio"/> List Open Sections	<input type="text"/>	Optional: Grade Option, Variable Units, Authorization Code		

[Show Study List](#)

[Go to Wait List Menu](#)

[Return to Main Menu](#)

[Send Request](#)

[Reset](#)

Request	Course Code	Grade Option	Variable Units	Authorization Code
<input type="radio"/> Add <input type="radio"/> Change	<input type="text"/>	<input type="checkbox"/> 1=Grade, 2=P/NP	<input type="text"/>	<input type="text"/>
<input type="radio"/> Drop <input type="radio"/> List Open Sections	<input type="text"/>	Optional: Grade Option, Variable Units, Authorization Code		

NOTE - You must successfully enroll in all co-classes of a course during the same WebReg session or you will be dropped from the entire course upon logout. To remain enrolled in this class, you must also enroll in: DIS

You have TENTATIVELY ADDED:

Crse Code	Dept	Crse Num	Sec Typ	Sec Num	Units	Grd Opt	Days	Time	Bldg	Room
69000	SOCIOL	1	LEC	A	4.0	GR	T T	12:30-01:50	SSLH	100

- To enroll: Select “Add”, input the 5 digit code from WebSOC, and then click “Send Request.”
- To drop: Select “Drop”, input the 5 digit code from WebSOC, and then click “Send Request.”
- To change grade option/units: Select “Change”, input the 5 digit code from WebSOC and change request, and then click “Send Request.”
- Once changes have been submitted, the system will indicate if further action is needed or if there are any problems. As the following image demonstrates, enrollment in Sociology 1 is not complete until the student enrolls in the corresponding discussion section.

Waiting List Menu

- When courses have reached the maximum enrollment, students may waitlist the course if the option is indicated on WebSOC. When you waitlist a course, you are not enrolled but rather placed on a list of students who will be automatically enrolled based on their order on the waitlist as enrolled students drop the course.
- Similar to the Enrollment Menu, in order to remain waitlisted for a course you must waitlist each type of class offered.
- You will be informed through your UCI email if you are enrolled in the course. Make sure to check your UCI email regularly.
- If you no longer wish to enroll in the course, please remove yourself from the waitlist to avoid being accidentally enrolled in the course should enough enrolled students drop. It is your responsibility to make sure that your official class schedule accurately reflects the courses you are taking.

Automatic log-off* will result if

Exceeding the maximum time (3 minutes of idle time and 12 minutes of activity) Minimizing the window Hitting the <BACK> button **An automatic log off may result in a delay in disconnecting WebReg from a record resulting in the message "Student record in use, please try again in a few minutes." If this happens, wait about 3-5 minutes then try again*

Student Billing System

Current Account

This is the Current Account view you'll see on ZOT Account Online. It shows the status of your registration fees, previous and current balances, future credits and debits, minimum amount due, as well as details of all transactions.

You will not receive any paper bills. Instead, it is your responsibility to check your bills on-line at

<https://zotaccount.uci.edu/>

Billing Statements (ZOT Bills)

Billing statements, called ZOTBills, are produced monthly for accounts that have activity or have balances greater than zero. If your account has a balance due or has had activity, your UCI email account will receive an email message reminding that you can view your most recent monthly bill, your current account information, and pay your bill electronically on ZOT Account Online.

If your account had no activity and the balance due is \$0.00, you will not receive an email, but you can view account information on ZOT Account Online twenty-one hours a day, seven days a week. Your ZOTBill is what you see in the Current Account view on ZOT Account Online.

Contact Campus Billing Services:

☎ (949) UCI-BILL (824-2455)

Registration Fees

This is the Registration Fee view you'll see on ZOT Account Online.

Payment Instructions

The Amount Due on the ZOTBill is the minimum payment amount required. Payments can be made electronically from your ZOT Account Online, or by check or money order drawn on U.S. funds and made payable to the **REGENTS OF THE UNIVERSITY OF CALIFORNIA** or **UC REGENTS**. Payment must be received by the Cashier by the due date to avoid late charges and other potential consequences.

Contact Central Cashier: ☎ (949) 824-6916

PACE Payment Plan (Installment Payments)

The PACE Plan spreads the costs of registration into three monthly payments over the length of the quarter. A student must apply for and activate a new PACE Plan Agreement each quarter. The Plan is activated when the Central Cashier processes the first installment payment (including the non-refundable participation fee), no later than the applicable registration fee deadline. Until then the current PACE application can be cancelled without penalty.

Each student participant must apply quarterly from ZOT Account Online and must agree to abide by the PACE Terms and Conditions in order to join and remain in the program.



Registration and Enrollment

Registration fee payment (either electronically or by check or money order along with a payment stub from your ZOT Account Online) must be received by the Central Cashier by 4:00 PM Pacific time on the fee deadline date. If the full amount of registration fees is covered by financial aid or a combination of aid and waivers, and you have enrolled in the Minimum Required Units (MRU), your fees will be paid automatically. If you have partial fee coverage, submit the amount due to the Central Cashier. Failure to meet the fee payment deadline will cause classes added via WebReg to be dropped and late service charges to be assessed.

Contact Registrar: ☎ (949) 824-6124

For New Students

Holds on New Students' Records

A "hold" is placed on your registration if you are a newly admitted student and the Office of Admissions and Relations with Schools (OARS) has not received the requested documents to verify your conditions of admission stated in your Transfer Conditions (mailed to you with your admissions letter). Requested documents may include official high school transcripts, official transcripts from any college course work, official test scores (SAT I or ACT, SAT II), and official Advanced Placement (AP) and/or International Baccalaureate Higher Level (IB) exam scores. To check the status of sent documents and to see what specific documents OARS still needs, go to Admissions and Relations with Schools and log on to **MyAdmissionsApplication@UCI**. Click on "MyTests" and "MySchools."

A "hold" on your record may prevent you from registering. If you have already enrolled, then the hold may drop you from your courses if you do not resolve the hold. Your admission to UC Irvine is subject to cancellation if OARS does not receive the requested official documents or if any information you submitted on your UC application does not agree with the official documents you submit.

Contact Admissions and Relations with Schools:
☎ (949) 824-6703

For Students with Financial Aid

As soon as you have enrolled in your Minimum Required Units (MRU) and satisfied any conditions noted on your ZOT Account, your aid will be applied to your fees to pay them automatically. The MRU for payment of fees is 6 units for financial aid. It is your responsibility to comply with all terms of the financial aid award before funds can be disbursed. In order to receive financial aid, students are required to pay all University debts, submit all required documents (including on-line entrance counseling materials), and enroll in the MRU.

After registration fees and other University obligations are paid, remaining aid will be electronically deposited or mailed, as you designated with the Office of Financial Aid and Scholarships, beginning the first day of the quarter.

Contact Office of Financial Aid and Scholarships:
☎ (949) 824-8262

Health Insurance

Undergraduate Student Health Insurance

As required by the UC Regents, all undergraduate students are assessed for health insurance as part of their student fees. If you have comparable, verifiable health insurance, you may apply for an exemption (waiver) of this fee using an electronic form available on ZOT Account Online. All waiver applications are handled through ZOT Account Online and instructions are provided. Waivers are due the Friday preceding the fee payment deadline. Additional information on the waiver process is available from the Student Health Center.

Contact Student Health Center Insurance Office:
☎ (949) 824-7093, ☎ (949) 824-4042, or ☎ (949) 824-9415

Student Access

🌐 <http://www.reg.uci.edu/access/student/welcome/>

Through Student Access, students can view and update their information including past and present coursework, address, view grades, etc.

DegreeWorks

This is essentially an online "degree check." You can refer to DegreeWorks on Student Access to see the progress you are making towards your requirements to graduate. It informs you of General Education, University, School, and Major Requirements. DegreeWorks does not always update immediately, so for the most up-to-date information, come into SSUSA for academic advisement.



University Requirements

UC Entry Level Writing

Can be met prior to UCI entrance by:

- Scoring 3 or higher on AP English (Language or Literature) exam.
- Scoring 680 or better on the Writing section of the SAT Reasoning Test.
- Passing UC Analytical Writing exam.
- Scoring 5 or above on the International Baccalaureate English A exam.
- Completion of one quarter or one semester of English composition with a “C” or better.
- Completion of the CSU English Equivalency test with Pass for two full courses of College English credit.

American History & Institutions

Can be met prior to UCI entrance by:

- Completing one year of U.S. history OR one semester of U.S. history and one semester of U.S. government in high school (passed with a grade of “C” or better).
- Scoring 3, 4 or 5 on A.P. U.S. History exam.
- Scoring 550 or better on SAT II American History and Social Studies test.

Unit

Credit for a minimum of 180 quarter units is required to graduate. (Note: Maximum units that can be transferred from other universities, community colleges, other institutions are 105 quarter units).

Grade

A minimum grade point average of at least “C” (2.0) is required overall and in all of the courses required for the major.

Residence

At least 36 of the final 45 units completed by a student for the bachelor’s degree must be earned in residence at the UCI campus. Participation in a UC EAP program, travel-study, or attending another UC is considered in residence.

Requirements for the School of Social Sciences

Math

- All math courses must be taken for grades
- All three-courses sequences
 - ✓ Math 2A-B AND Stats 7
 - ✓ Anthropology 10 A-B-C
 - ✓ Psychology 10A-B-C
 - ✓ Social Science 10 A-B-C
 - ✓ Sociology 10 A-B-C
- Business Economics and Economics majors: Math 2A-2B-4 AND Econ 15A-15B-122A
- Quantitative Economics majors: Math 2A-2B-4-3A and Statistics 120A-120B-120C
- May NOT take Social Science 9 A-B-C to fulfill mathematics requirement

Computer

One of the following courses: Social Science 3A or ICS 31 or Psychology 114M (recommended for Cog Sci majors)



General Education Requirements

Please refer to the General Catalogue for a complete list of courses.

I. Writing (2 lower-division courses plus 1 upper-division course)

Because of the importance of writing in every academic discipline, in the professions, and in public life, the University is committed to developing a variety of communication abilities in students at all levels and areas. The Writing Requirement expresses this broad commitment, but the concern for and attention to rhetorically effective, accurate writing is expected in all courses.

- Need (2) lower division courses and (1) upper division course.
- Must complete lower division writing before 7th quarter at UCI.
- Must pass the UC Analytical Writing exam before enrolling in courses.
- Courses for writing must be completed with a minimum grade of “C” or better

Humanities Core (Humanities 1A-1B-1C) with writing seminar component <ul style="list-style-type: none"> • Yearlong sequence (8 units a quarter) • Deals with major themes in: <ul style="list-style-type: none"> ✓ History ✓ Literature ✓ Philosophy ✓ Cultural Studies • Students must complete the writing seminar component of the Humanities Core (Humanities 1A-B- C), with a C or better in (1A or 1B) AND in 1C, or for students held for the UC Entry level Writing Requirement, a C or better in 1B AND1C. 		Writing 39B (or WR 37) AND 39C, 30, 31, OR 38 <ul style="list-style-type: none"> • Two classes: 4 units a quarter (6 units for WR 37) • Note: Writing 30, 31, and 38 may only be taken if the student completes Writing 39B with a grade of “B” or better. • Focuses on: <ul style="list-style-type: none"> ✓ Rhetorical Principles ✓ Critical Reading Skills ✓ Written analysis of readings • Offers students more choices with regards to how they complete other General Education requirements 		
Category 1: 2 Lower division writing	Humanities 1A or 1B-1C	Category 1: 2 Lower division writing	Writing 39B AND 39C, 30, 31, OR 38	8 units
Category 4: 3 Arts & Humanities courses	Humanities 1A-1B-1C	Category 4: 3 Arts & Humanities courses	3 approved courses	12 units
Category 7: Multicultural Studies	Humanities 1C	Category 7: Multicultural Studies	1 approved course	4 units
Category 8: International/Global Issues	Humanities 1C	Category 8: International/Global Issues	1 approved course	4 units
Total Units	24 units	Total Units		28 units

II. Science and Technology (3 courses required)

Understanding the nature of scientific inquiry and the operation of the biological, physical, and technological world is essential for making personal and public policy decisions in a technological society.

III. Social and Behavioral Sciences (3 courses required)

- Satisfied by majoring in the School of Social Sciences

IV. Arts and Humanities (3 courses required)

Study of the Arts and Humanities expands the student's sense of diverse forms of cultural expression, past and present. Students develop their critical capacity as they discover how meaning is created and experience variously interpreted.

V. Quantitative, Symbolic, and Computational Reasoning (3 courses required)

- Completed by Social Sciences Math Requirements

VI. Language other than English (up to 3 courses)

Study of a language other than English expands students' horizons by encouraging understanding of another culture through its language and heightens one's own language through the investigation of another linguistic system.

Can be met prior to UCI entrance by:

- Credit for 3 years of a single language other than English in high school or its equivalent (must have "C" average in the last year).
- AP score of 3, 4 or 5 in a language other than English
- SAT II score of 570 or better (500 or better in Modern Hebrew)

At UCI, can be satisfied by:

- UCI Exemption Exam (Contact the [UCI Testing Center](#))
- Satisfaction of the 1C level of a language other than English
- EAP approved course of study

NOTE: Chicano/Latino Studies majors must take Spanish 2A and International Studies majors must complete the 2B level of one language other than English for a letter grade.

VII. Multicultural Studies (1 course required)

This requirement develops students' awareness and appreciation of the history, society, and/or culture of one or more underrepresented groups in California and the United States.

VIII. International/Global Issues (1 course required)

Courses in this category focus on significant cultural, economic, geographical, historical, political, and/or sociological aspects of one or more countries other than the United States. Approved courses can be found in the General Catalogue.

In fulfilling Category VIII, students are encouraged to use courses that are also being used in fulfillment of other GE Categories. In addition, Category VIII may be satisfied by one quarter's participation in the Education Abroad Program (EAP).

Overlapping courses between GE Categories:

- Courses applied to Categories II, III, IV, V may not have any overlaps between these Categories.
- Courses applied to Categories VII and VIII may overlap with other categories (including Categories II, III, IV, V)



What can I do with a Social Science Major ?

The list below represents a sampling of industries for Social Sciences major and is not comprehensive.

Please visit the UC Career Center for assistance and to further research your options.

Bank/Finance <ul style="list-style-type: none">- Credit Lending Systems- Trusts Insurance	Law Enforcement <ul style="list-style-type: none">- Special Agent- Computer Security- Forensic Investigations	Law <ul style="list-style-type: none">- Paralegal- Public Administration- Judiciary- Lawyer	Non-Profit <ul style="list-style-type: none">- Public Relations- Administration- Fund Raising- Policy Analysis- Development
Business <ul style="list-style-type: none">- Consulting- Retail Management- Human Resources- Public Relations- Sales/Marketing- Economist	Health Care <ul style="list-style-type: none">- Rehabilitation- Mental Health- Social Services	Media/Entertainment <ul style="list-style-type: none">- Writing/Editing- Advertising- Event Planning- Broadcasting- Journalism	Politics <ul style="list-style-type: none">- Public Interest- Legislative- Local/State/Federal- Lobby- Campaign
Education <ul style="list-style-type: none">- Teaching- Research- Administration	Hospitality <ul style="list-style-type: none">- Sales and Marketing- General Management- Food and Beverage Sales	Travel and Tourism <ul style="list-style-type: none">- Travel/Tour Consultant- Meeting/Convention- Planner Park- Superintendent	Research <ul style="list-style-type: none">- Market Research- Data Analysis- Demography- Education
Government <ul style="list-style-type: none">- Corrections- Foreign Service- Political/Economic Affairs- Rehabilitation- Urban/City Planning- Policy Analysis	Human Services <ul style="list-style-type: none">- Counseling- Mental Health- Case Management- Social Work- Community Relations	Museums <ul style="list-style-type: none">- Curator- Conservation- Libraries	UCI Career Center <p>100 Student Services I</p> <p>☎ Phone: (949) 824-6881</p> <p>🌐 www.career.uci.edu</p>

STRATEGIES

These are a few suggestions to prepare you to successfully pursue your career:

1. Obtain an internship or volunteer position in your field of interest to gain experience and skills.
2. Get involved in campus clubs and organizations to develop leadership abilities and expand your network.
3. Attain research experience with a professor or department on campus for desired field.
4. Research occupations to find out education requirements, desired skills, salary, outlook and related jobs.
5. Maintain a good GPA and develop strong personal recommendations with supervisors and professors.
6. Become familiar with the hiring practices for your industry of interest.
7. Take specific classes or add a minor to specialize and advance your skills.
8. Get a full or part-time job to gain time management and customer service skills and responsibility.
9. Prepare for graduate school (if necessary) by researching schools and taking the required admissions tests (i.e. GRE, GMAT, LSAT, etc).
10. Visit the UCI Career Center to learn about choosing/changing your major, the job search process, selecting and applying to graduate school, internship opportunities, interviewing, and resume writing. Information available online www.career.uci.edu and in the UCI Career Center Library (100 Student Services 1).



CHANGE OF MAJOR REQUIREMENTS

How do I change/declare/add my major?

You may change/declare/add your major once the quarter has started. However, each School on campus has specific policies and requirements regarding change of majors. It is in your best interest to inquire early as to these requirements. Academic Counselors and Peer Academic Advisors in each school will be able to assist you in this process.

Anthropology, Chicano/Latino Studies, International Studies, Political Science and Social Policy & Public Service

Requirements	Description
Cumulative UC GPA	2.00 GPA and 2.00 GPA for the quarter prior to changing major
Course Grades	<ul style="list-style-type: none">• Completion of at least five courses from the School of Social Sciences. Two of the five courses must be in the student's intended major. All five courses must have a GPA average of 2.00 or better with no grade less than a "C".• Option available only for students with 60 or fewer units (excluding AP credits and other units earned prior to high school graduation): At least two courses with 2.3 or better in the student's intended major and no grade less than a "C".

Business Economics, Economics, Quantitative Economics

Requirements	Description
Cumulative UC GPA	2.00 GPA and 2.00 GPA for the quarter prior to changing major
Course grades	No grade below a "C" in Math 2A-B and Econ 20A-B, with an average of 2.50 GPA or above.

Psychology

Requirements	Description
Cumulative UC GPA	2.70 GPA for Option 1 or 2.00 GPA for Option 2 and 2.00 GPA for the quarter prior to changing major
Course Grades	Completion of one of the following options: <ul style="list-style-type: none">• Option 1: Two courses in Psychology with grades of "B-" or better in each course. One of the courses must be from Psychology 7A, Psychology 9A, Psychology 9B, and Psychology 9C.• Option 2: Psychology 9A-B-C and two Psychology core courses with a GPA of at least 3.00 for those five courses.

Sociology

Requirements	Description
Cumulative UC GPA	2.00 GPA and 2.00 GPA for the quarter prior to changing major
Course grades	Completion of at least five courses from the School of Social Sciences. Two of the five courses must be in Sociology. All five courses must have a GPA average of 2.30 or better with no grade less than a "C".

B. S. in Cognitive Sciences

Requirements	Description
Cumulative UC GPA	3.00 GPA and 3.00 GPA for the quarter prior to changing major
Course grades	<ul style="list-style-type: none">• Must complete Math 2A, 2B, Stats 7 and either ICS 31 or Psych 114M with no grade less than a B-.• Complete Psych 9A, Psych 9B, and Psych 9C with no grade less than a B-.

Note: the major is ideal for a student who has strong math and computer programming skills.

For further information, visit the department website at: <http://www.cogsci.uci.edu/undergraduate/bscogsci.php>

How many courses can I overlap if I am a double major or have a minor?

- Double major within the School of Social Sciences: 2 introductory level lower division courses
- One Social Sciences major and a major from another school: 2 courses
- Major in the School of Social Sciences and a minor from another school: 2 courses
- Major and a minor in the School of Social Sciences: **NO OVERLAP.**
- No course overlaps between two minors

MINORS

A minor consists of a coordinated set of courses (seven or more) which together take a student well beyond the introductory level in an academic field, subject matter, and/or discipline but which are not sufficient to constitute a major. An interdisciplinary minor consists of courses offered by two or more departments, schools, or programs. Generally, all minors are available to all students, with the following exceptions: (1) students may not minor in their major, and (2) students may not complete certain other major/minor combinations that are expressly prohibited, as noted in the Catalogue. Minors are listed on a student's transcript but not on the baccalaureate diploma. If interested, students should contact the School that houses the minor.

CLAIRE TREVOR SCHOOL OF THE ARTS

Digital Arts
Digital Filmmaking

SCHOOL OF BIOLOGICAL SCIENCES

Biological Sciences

THE PAUL MERAGE SCHOOL OF BUSINESS

Accounting
Innovation and Entrepreneurship
Management

DEPARTMENT OF EDUCATION

Educational Studies

THE HENRY SAMUELI SCHOOL OF ENGINEERING

Biomedical Engineering
Materials Science Engineering

COLLEGE OF HEALTH SCIENCES

Public Health

DONALD BREN SCHOOL OF INFORMATION AND COMPUTER SCIENCES

Bioinformatics
Digital Information Systems
Health Informatics
Informatics
Information and Computer Science
Statistics

SCHOOL OF HUMANITIES

African American Studies
Archaeology
Art History
Asian American Studies
Asian Studies
Chinese Language and Literature
Classical Civilization
Comparative Literature
English
European Studies
Film and Media Studies
French
Gender and Sexuality Studies
German Studies
Global Cultures
Greek
History
Humanities and Law
Italian Studies
Japanese Language and Literature
Jewish Studies
Korean Literature and Culture
Latin
Latin American Studies
Literary Journalism
Medical Humanities
Persian Studies
Philosophy
Queer Studies
Religious Studies
Russian Studies
Spanish

INTERDISCIPLINARY STUDIES

Civic and Community Engagement
Global Sustainability
History and Philosophy of Science
Native American Studies

SCHOOL OF PHYSICAL SCIENCES

Earth and Atmospheric Sciences
Mathematics
Mathematics for Biology

SCHOOL OF SOCIAL ECOLOGY

Criminology, Law and Society
Psychology and Social Behavior
Social Ecology
Urban and Regional Planning
Urban Studies

SCHOOL OF SOCIAL SCIENCES

Anthropology
Chicano/Latino Studies
Conflict Resolution
Economics
Hearing and Speech Sciences
International Studies
Linguistics
Medical Anthropology
Political Science
Psychology
Sociology

CERTIFICATES

Anthropology

www.anthropology.uci.edu/undergrad/cert.php

To help provide more focused undergraduate training in anthropology with real-world applications, the Department of Anthropology offers six certificate programs, open to all undergraduates regardless of major. Each is designed to complement a student's other coursework and to provide expertise in a specific area of anthropological inquiry.

- Economy and Culture
- Gender Studies
- Global Studies
- Law and Policy
- Medical Anthropology

Sociology

www.sociology.uci.edu/undergrad/certificate

The UCI Sociology Department offers undergraduate Sociology Majors the opportunity to earn up to four departmental certificates. Each certificate recognizes successful completion of a focused course of study in one of four areas.

- Business, Economy, and Organizations
- Diversity and Inequality
- Global and International Sociology
- Social Problems & Public Policy

Chicano/Latino Studies

www.chicanolatinostudies.uci.edu/undergrad/cert.php

The Department of Chicano/Latino Studies offers the opportunity to earn up to three Departmental certificates. Each certificate recognizes successful completion of a focused course of study in one of three areas.

Applications and notices of designated University or Departmental events, seminars, and colloquia pertaining to each certificate will be posted on the undergraduate bulletin board on the 3rd floor of Social Science Tower (outside of Social Science Tower 383) and online. The certificate program is available to all majors.

- History and Culture
- Social Policy and Issues
- Chicano/Latino Community in a Global Context

Middle East Studies

www.internationalstudies.socsci.uci.edu/undergrad/certificate/other.php

This certificate recognizes intensive study and knowledge of various aspects of the Middle East region. It is designed for students who want to narrow their focus of study to a particular region in or culture, language, or religion and issues pertaining to the Middle East.

TRANSFER UNITS

To receive credit or units for coursework completed outside of UCI, student must submit official sealed copies of the transcripts or records to UCI Admissions or the Social Sciences Undergraduate Student Affairs (SSUSA). The following includes some tools to determine how California community college coursework may transfer. For coursework taken at a 4-year university or out of state, please contact SSUSA to have them evaluated by an academic counselor (Please refer to the "Petitions" section).

ASSIST

www.assist.org

ASSIST is an online student-transfer information system that shows how course credits earned at California community colleges can be applied when transferred to the University of California, Irvine. ASSIST is the official repository of articulation for California's public colleges and universities and provides the most accurate and up-to-date information about student transfer in California.

Steps:

1. Go to www.assist.org
2. Select your community college from a list of colleges and select a catalogue year.
3. Select "University of California, Irvine".
4. Find courses
 - a. For lower division courses in your major, select your major.
 - b. For Breadth/General Education requirements, select "General Education/Breadth"

This website only lists which courses can be transferred if offered. Students must still refer to the community college's website to find course schedules. Upon

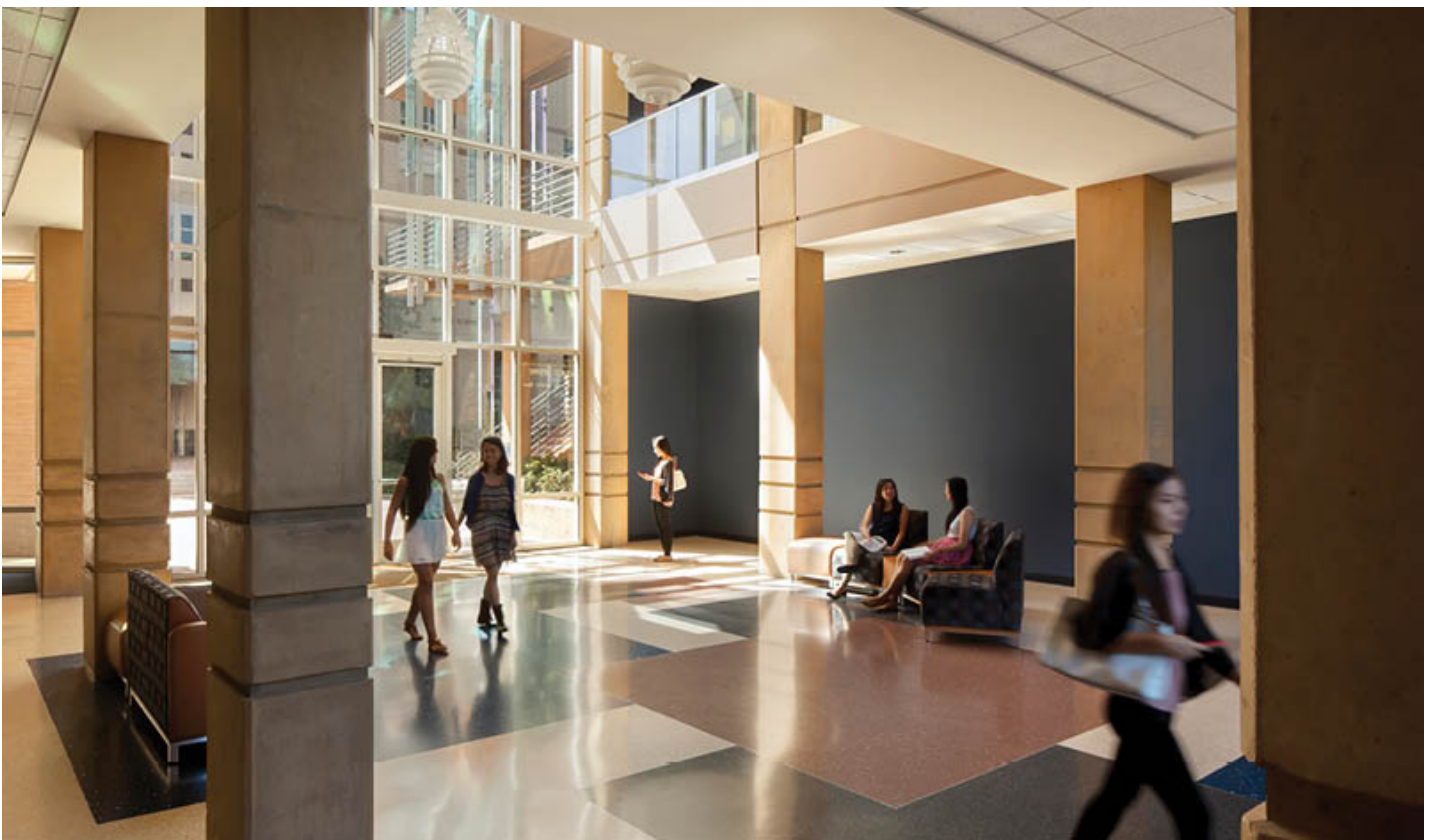
completion of the courses, students should request to have an official sealed copy of the transcript sent to UCI Admissions or the Social Sciences Undergraduate Student Affairs (SSUSA).

Courses taken at community colleges can only transfer units and subject credit. Community colleges only offer lower division courses, so all upper division courses must be taken at four year universities. Note that all math courses and major courses must be taken for grades. Refer to “Transcript Notations” for information about unauthorized repeats.

****For UC transferable courses, 1 semester unit is equivalent to 1.5 UC quarter units****

College Board Advanced Placement Exams and International Baccalaureate Exams

For a complete list of acceptable AP and IB exams, visit: <http://catalogue.uci.edu/informationforprospectivestudents/undergraduateadmissions/#ap>



Student Affairs Office Functions

 <http://www.undergrad.socsci.uci.edu/studentaffairs.php>



Whom do I speak with? It depends on what you need! The School of Social Sciences does not assign specific advisors so you can meet with any one of our Academic Counselors or Peer Academic Advisors to find the answers you need.

Front Desk (Walk-In) An Academic Counselor to answer quick questions, direct you to the correct resource, schedule appointments with Academic Counselors, and provide forms regarding excess unit requests, prerequisite clearance, change of majors, degreeworks updates, withdrawal forms, post-quarter add/drop/changes, and part-time student applications.

Peer Academic Advisors (Walk-In) Questions regarding unofficial degree checks, class schedules, general education, school and major requirements, change of major process, petitions, and application to graduate.

- To talk to a Peer Academic Advisor you may come in during office hours for walk-in advising.

Academic Counselors (Appointment/Walk-In)

Official graduation degree check, petitions, academic contracts or if you have any sort of IGETC related questions.

- Appointments with Academic Counselors are only scheduled for declared students who are majors in the School of Social Sciences. To schedule an appointment with an Academic Counselor please call (949) 824-6803.

Dean's Signature / Approval

Academic Counselors in the Social Sciences Undergraduate Student Affairs Office (SSUSA) are authorized to sign for the Dean of Social Sciences. Therefore, if any forms, including withdrawal, part-time student petition, etc. require the Dean's Signature, please come to the Social Sciences Undergraduate Student Affairs Office (SSUSA). Contact the Registrar for verifications of enrollment and grades.

Study Abroad Advising

- Prospective Education Abroad Program (EAP) participant-Once admitted to a program and the course list is available for students, you would first email one of the Study Abroad Academic Counselors in our office. This email will need to include the courses and course descriptions (syllabus for each course, if possible) that the student is interested in taking while on EAP. After you receive an email response, the counselor may request that you schedule an appointment for additional information or guidance.
- Prospective International Opportunities Program (IOP) participant- Contact the Study Abroad Center for information regarding the online IOP Academic Planning Tool.

EAP/IOP Returner- You may email the Study Abroad Academic Counselor, you worked with previously to have courses updated on your record/Degreeworks. You also have the option of calling (949) 824-6803 to schedule an appointment with a Study Abroad Academic Counselor once grades have been posted on your UCI transcript (for EAP students) or official transcripts have been received (for IOP students). Make sure to bring course syllabi to the appointment in case you need to petition.

Academic Probation/Contract

Good academic standing at UCI is maintaining quarterly and cumulative grade point averages (GPAs) of at least 2.00. If either GPA falls below 2.00, the student should contact the Social Sciences Undergraduate Student Affairs Office as soon as possible to determine their status and whether action is necessary to avoid disqualification. The two main phases before disqualification are Academic Probation and Academic Contract.

Academic Probation

When a student's quarterly GPA falls below 2.00 but their UC cumulative GPA is still above 2.00, the student is placed on Academic Probation. No action is taken but this serves as a warning.

Academic Contract

There are two situations which place a student on academic contract.

- Two consecutive quarterly GPAs below 2.00
- UC cumulative GPA below 1.8

An email will be sent to you regarding your Academic Contract. Do not ignore the email. It will serve as your contract if you do not come into the SSUSA to see an Academic Counselor. If you have any questions or would like to discuss the terms of the Academic Contract, please call to schedule an appointment at (949)824-6803.

If the student satisfies the terms of the Academic Contract, then the student may be off contract or the contract may be extended, depending on the student's overall progress. Meeting the terms of the Academic Contract ensures the student's eligibility to continue as a UCI student for the upcoming academic quarter.

If the student violates the contract, the record will be reviewed again to determine whether the student will be

disqualified. The student in this situation should contact the SSUSA to determine their status as soon as possible.

Academic Dishonesty

ACADEMIC DISHONESTY is NOT TOLERATED so DON'T DO IT!

The UCI General Catalogue has an explanation of your responsibility to be academically honest as an undergraduate.

<http://catalogue.uci.edu/appendix/#academichonestytxt>

All incidents of dishonesty are reported and recorded within the student's major, the academic unit that offers the course AND the campus-wide reporting system.

The following are examples of what is considered dishonest acts:

- **Cheating** - Looking at someone's test, giving someone your paper to look at or giving someone your test from a course.
- **Dishonest Conduct** - Stealing a test, forgery, having someone else do your work for you.
- **Plagiarism** - Copying from a source without proper notation (e.g. internet or book)
- **Collusion** – Knowingly and intentionally helping another student perform any of the above acts of cheating, plagiarism, or dishonest conduct.
- **Examples of consequences for dishonest acts**
 - ✓ Failing an assignment
 - ✓ Failing the course
 - ✓ Suspension from UCI
 - ✓ More than one incident, dismissed from UCI

Consequences are at the professor's discretion. Read the syllabus for more information.

View the following tutorial to learn more about plagiarism and academic dishonesty:
http://cast.oit.uci.edu/tltc/Production/TLTC/DUE_Plagiarism_Tutorial/Plag_Tutorial.htm

To learn more about Academic Honesty at UCI visit:
<https://aisc.uci.edu/index>

Withdrawal

Undergraduate students who pay fees for a regular academic quarter and then decide to withdraw from the University must submit a Withdrawal form to the Office of the Registrar after obtaining the signature of their academic dean (available at the Social Sciences Undergraduate Student Affairs Office (SSUSA) for students affiliated in the School of Social Sciences). This form serves two purposes: (1) a refund of fees, if applicable; and (2) automatic withdrawal from all classes. The effective date of withdrawal is used in determining the percentage of fees to be refunded. A "W" grade will be recorded for each course in which enrollment is withdrawn if the student's effective date of withdrawal is after the end of the sixth week of classes.

New undergraduate students are encouraged to seek advice from their admissions or academic advisor to understand the consequences of withdrawal and their eligibility to return, before submitting the form (Please refer to the Readmission section).

If an undergraduate student plans to leave the University after completing all academic work for the latest quarter of enrollment and has not paid fees or enrolled for the next quarter, a formal notice of withdrawal is not necessary.



Readmission

All Students

Readmission is subject to Dean's approval (available in the Social Sciences Undergraduate Student Affairs Office (SSUSA) for students affiliated with the School of Social Sciences) and campus deadlines (August 1 for Fall Quarter, November 1 for Winter Quarter, and February 1 for Spring Quarter). To apply for readmission, a student must first contact their academic advising office to request readmission and approval. The application is online and will be submitted by an academic counselor upon approval. There is a non-refundable, non-transferable readmission fee (currently \$70) that will be added to a student's Zot Bill within two to three days of being approved for readmission.

New Undergraduate Students

New undergraduate students who cancel registration prior to the first day of the quarter must reapply to UCI; they are not eligible to file for readmission as described above.

Former UCI Students

Former UCI students who wish to be readmitted should contact the undergraduate advising office of the school or program which offers their intended major.

Poor Academic Standing

If a student has been academically disqualified from the University or has left the University while on probation or subject to disqualification, the student must apply for readmission. The application is subject to the approval of the Dean of the School which the student hopes to enter. Transcripts for work taken at other institutions must be submitted as part of the application.

Part-Time Student Status

A student with full-time student status must be enrolled in a minimum of 12 units. A student enrolled in less than 12 units will lose their full-time student status, but still pay the full-time fees unless a Petition for Reduced Fee Part-Time Study Program has been submitted by the deadline.

The School of Social Sciences only accepts four reasons for petitioning for reduced fees as a part-time student and requires appropriate documentation:

- Health
- Family obligation
- Work (Student must work a minimum of 25 hours a week to qualify)
- Last Quarter (Student must have a graduation application on file for that quarter)

If the student qualifies, they must bring in the documentation to the Social Sciences Undergraduate Student Affairs Office (SSUSA) and fill out the Petition for Reduced Fee Part-Time Study Program. Once approved, the student must submit the form to the Office of the Registrar no later than 5:00 p.m. Friday, the end for the third week of classes, to be eligible for reduced fees.

Add/Drop/Change Policies

To drop or add or change the grading option on a course, you use WEBREG at <http://www.reg.uci.edu/registrar/soc/webreg.html>

Dropping a Course

The deadline to DROP a course is Friday by 5:00 PM of week 2 in the current quarter.

Adding a Course

The deadline to ADD a course is Friday by 5:00 PM of week 2 in the current quarter.

Changing a Course Grading Option (Grade to Pass / No Pass or Pass / No Pass to Grade)

For majors in the School of Social Sciences, the deadline to change your grading option is by 5:00 PM of week 6 in the current quarter. The Dean's approval will not be given after week 6. Beginning week 3, change of grade option requests must be submitted through Student Access, not WebReg.

Re-take Policy

Classes cannot be retaken unless the grade earned was a "C-" or lower. The first 16 units retaken will replace the grades and units completely when calculated into the UCI GPA. The most recent grade will always replace the previous grade regardless of which grade is better, if it is within the first 16 units retaken. After the first 16 units, the old grade and the new grade will be averaged when calculated into the UCI GPA. The original and subsequent grades will all remain noted on the transcript.

Transcript Notations

"UR" - Unauthorized Repeat. If a student repeats a course for which a passing grade ("C" or better) has already been received and the course is not approved as repeatable for credit, the student will receive a —"UR" and no credit, grade, or units will be given.

"NR" — "No Record". This turns into an "F" if it is not taken care of within one quarter.

"I" — "Incomplete". This means that your professor did not have enough coursework to determine your grade. Incomplete grades are only issued to a student who for a medically documented reason or some other documented reason was unable to complete an assignment or exam. Once you make up the work within the time agreed upon by the instructor, you will be issued a grade. Effective Fall 2010, any Incomplete grades that have not been changed within three quarters will automatically lapse to a grade of "F" on your transcript. Note you do not enroll in the course again, but complete the work with the professor's approval and then receive a grade change with the help of the SSUSA.

"W" — "Withdrew from Course". This means that you dropped the course after the drop deadline.

Petitions

Students petition to receive credit for courses not preapproved on Assist.org or articulated in the catalogue.

Course Petition

(additional paperwork or documentation required)

- Please bring in paperwork (i.e., course descriptions, syllabi, etc.) to our office.

- Fill out the paper petition in our office or the fillable document under “Office Forms” found here:

www.undergrad.socsci.uci.edu/policies/index.php

We will contact you by phone or email you with the results.

Prerequisite Clearance

If you have a problem enrolling in a class and have met all prerequisites for the course, please fill out a prerequisite clearance form found under “Office Forms” here: www.undergrad.socsci.uci.edu/policies/index.php

Students, especially transfer students, need to come in to fill out prerequisite clearance forms if prerequisites (lower division writing, psychology, economics, etc.) were taken at another school or other institution. In addition, WebReg doesn’t always recognize AP scores or IB exam results. This clearance must be done for each course that may require those courses as prerequisites. Please fill out the request before your enrollment window opens to avoid any complications with enrollment.



Student Resources

Places where you can find help



Social Sciences Academic Resource Center (SSARC)


The Social Sciences Academic Resource Center was created over a decade ago to assist School of Social Sciences students. SSARC seeks to develop students into working professionals by providing resources and services grounded in professional development, graduate school advice, and internship placement.


The Social Sciences Academic Resource Center provides valuable resources for undergraduates in the School of Social Sciences and is conveniently located down the hallway from the Social Sciences Undergraduate Student Affairs Office in the Social and Behavioral Sciences Gateway building. Friendly and knowledgeable

SSARC staff can guide you to the information you need in a relaxed, pleasant environment.

- Internships
- Speaker Series
- Research and Leadership Opportunities
- Certificate Programs
- Bagel Social Hours

Monday – Friday 9:00 A.M. – 5:00 P.M.
1230 Social & Behavioral Sciences Gateway

 Phone: (949) 824-8322

 E-mail: ssarc@uci.edu

 <http://www.ssarc.socsci.uci.edu/>

Student Success Initiatives (SSI)

Housed within the Division of Undergraduate Education, Student Success Initiatives (SSI) is an academic support program dedicated to helping first-generation college, low-income, former foster youth, and/or disabled students succeed and thrive at UCI. Their goals are to help students transition and maximize their college experiences so that they can be successful undergraduate students. SSI is committed to supporting students with their successful college transitions, increasing students' academic and social self-confidence, as well as providing them with awareness of the skills needed to be successful at the university, including information on campus resources.

Monday – Friday 9:00 A.M. – 5:00 P.M.

2200 & 2300 Student Services II

☎ Phone: (949) 824-1142

🌐 <http://ssi.uci.edu/>

Learning and Academic Resource Center (LARC)

The Learning and Academic Resource Center provides services designed to help students acquire the skills they need to develop intellectually, become successful learners, and achieve their academic and professional goals. LARC staff and programs provide students with the personal contact and support needed for academic success on a large and diverse campus. The Center works closely with faculty to develop programs that meet both curricular objectives and the changing needs of students. LARC programs stress the development of academic abilities that all university students need regardless of major: effective study strategies, critical reading and analytical writing. The Center offers adjuncts classes, workshops, peer-tutoring groups, and individual counseling, including assistance in all forms of academic reading and writing.

Monday – Friday

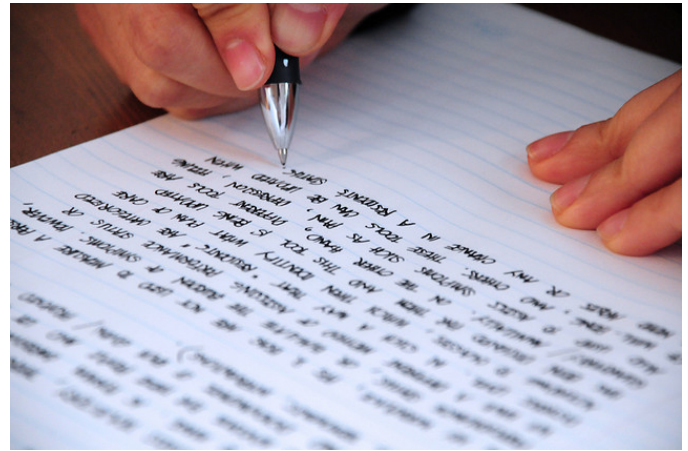
8:30 A.M. – 4:30 P.M.

284 Rowland Hall

☎ Phone: (949) 824-6451

✉ E-mail: larc@uci.edu

🌐 www.larc.uci.edu



UCI Writing Center

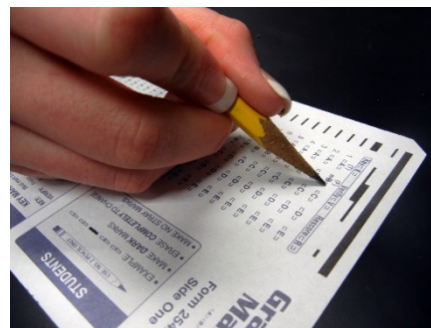
The Center for Excellence in Writing and Communication (or “Writing Center” for short) promotes effective writing and communication as lifelong skills. Not only are these skills necessary for personal and professional survival, they are also powerful ways in which people think through issues, consider multiple points of view and become more consciously aware of the world around them.

193 Ayala Science Library

☎ Phone: (949) 824-8949

✉ E-mail: writing-center@uci.edu

🌐 <http://www.writingcenter.uci.edu/>



UCI Academic Testing Center

The UCI Academic Testing Center, a unit within the Division of Undergraduate Education, administers the Placement Testing Program to new and continuing students to ensure correct placement in selected introductory courses and to help students assess their readiness for University-level work. These tests are selected or developed by UCI faculty who also determine the grading criteria for each test. Students,

with the help of academic counselors, use results from placement tests to determine enrollment in introductory courses and to formulate a plan of study that is best suited for their learning needs and career goals.

Placement tests are currently given in the areas of Calculus, Physics, Chinese, Japanese, Korean, Vietnamese, and Academic English.

The Academic Testing Center also administers the Language Testing Program. Tests are offered in over 40 languages and are administered at scheduled times during the academic year.

The Academic Testing Center participates with the Composition Program in the campus-based administration of the University of California Analytical Writing Placement Exam.

Monday – Friday

9:00 A.M. – 5:00 P.M.

3040 Anteater Instruction and Research Bldg

☎ Phone: (949) 824-6207

📠 Fax: (949) 824-3832

✉ E-mail: testcenter@uci.edu

🌐 www.testingcenter.uci.edu

UCI Career Center

Students are strongly encouraged to visit UCI's Career Center early in their academic career. The Center assists undergraduate and graduate students with career decision-making and career planning through individual counseling, workshops, career programs, career fairs, employment opportunities, and graduate and professional school information. The center provides students many opportunities to connect with employers, alumni, and professional and graduate schools. The Center assists students seeking part-time and full-time employment opportunities, teaches job search skills and interviewing techniques; and provides job listings through Handshake.

Monday – Friday

8:00 A.M. – 5:00 P.M.

100 Student Services 1

☎ Phone: (949) 824-6881

✉ E-mail: career@uci.edu

🌐 www.career.uci.edu

Undergraduate Research Opportunities Program (UROP)

The Undergraduate Research Opportunities Program (UROP) in the Division of Undergraduate Education encourages and facilitates faculty-mentored research and creative activities by undergraduates from all schools and academic disciplines at UCI. UROP also collaborates with various schools and research units to develop specialized research opportunities. Conducting research and creative activities has become an integral component of the education undergraduates receive at UCI, and provides students with the necessary skills to succeed in their future careers. Research opportunities are available not only from every discipline, interdisciplinary program, and school, but also from many outside agencies, including national laboratories, industrial partners, and other universities. Opportunities are listed on the UROP website, and distributed through various e-mails throughout the academic year. Students interested in receiving more information and individualized assistance are encouraged to contact the UROP Office to set up an advising appointment.

Through UROP's various programs, the UROP Team assists students through all phases of the research process, whether it is with proposal writing, developing research plans through project management skills, receiving grants to fund research projects, scholarly journal writing through The UCI Undergraduate Research Journal, or presenting results of the research or creative project through the UCI Undergraduate Research Symposium.

Monday – Friday

9:00 A.M. – 5:00 P.M.

2300 Student Services II

☎ Phone: (949) 824-4189

📠 Fax: (949) 824-1607

✉ E-mail: urop@uci.edu

🌐 www.urop.uci.edu



Counseling Center (Non-Academic)

The Counseling Center is here to provide the UCI community with a broad range of mental health support services. They include: individual, couples, and group counseling, urgent care, crisis response, consultation, and outreach programs.

The Counseling Center is committed to helping students achieve the maximum benefit from their UCI experience. The Center's intention is to support students in performing well academically, to assist them through developmental tasks associated with their college student years, and to learn how to be more effective in developing, maintaining, and negotiating relationships with others. The Center is also committed to managing psychological crises which arise as a result of students' inability to cope with the pressures associated with a stressful academic environment.

The services offered by the Counseling Center are free of charge and available to all currently enrolled students. Services can be grouped into four areas: counseling and psychotherapy; workshops; academic instruction; training and consultation.

The Counseling Center is open from 8am to 5pm, Monday through Friday for scheduled appointments and a counselor is always available on an urgent basis. If you would like to talk with someone or make an appointment for counseling services please call (949) 824-6457.

Monday – Friday
8:00 A.M. – 5:00 P.M.
203 Student Services I
☎ Phone: (949) 824-6457
🌐 www.counseling.uci.edu

Student Health Center

Effective Fall Quarter 2001, the Regents of the University of California instituted health insurance coverage as a condition of enrollment for all undergraduate students. This insurance is now included in your student fees and enrollment in the plan is automatic when you pay your fees. You may waive out of this plan if you can demonstrate comparable and verifiable health coverage that meets the campus' minimum standards for insurance. (Refer to "Health Insurance") The Student Health Center is the primary care facility for students covered by the USHIP. In order to take advantage of your insurance plan, all medical care must begin at Student Health. If you need a medical service that we cannot provide, you will be referred to a qualified provider in the community. If you are a member of USHIP, the cost of your medical care will be billed directly to your insurance plan. Students who waive out of the plan, but use Student Health, will pay at the time of service and will be given an itemized receipt they may submit to their insurance carrier for reimbursement.

Monday, Wednesday, Thursday, Friday
8:00A.M. – 5:00P.M.
Tuesday hours are 8:00A.M. – 7:00P.M.
Saturday hours are 9:00A.M. – 1:00P.M.
501 Student Health
☎ Phone: (949) 824-5301
☎ Fax: (949) 824-3033
🌐 www.shs.uci.edu



Student Life & Leadership

The mission of the Student Life & Leadership Office is to provide services, programs, and facilities that enhance the quality of education by extending the learning environment beyond the classroom and into the co-curricular lives of UCI students. Student Life & Leadership promotes student participation in campus life and advocates for needs that are valued by students and validated by campus objectives.

Student Life & Leadership also promotes an active college lifestyle and encourages students to take advantage of opportunities to get involved with the university and student organizations. It is recommended, however, that all students maintain an awareness of balancing all aspects of college life and be educated about the programs with which they choose to participate.

Monday – Friday

8:00 A.M. – 5:00 P.M.

G308 Student Center

☎ Phone: (949) 824-5181

☎ Fax: (949) 824-3412

✉ E-mail: deanstu@uci.edu

🌐 www.studentlife.uci.edu

UCI Campus Organizations

🌐 <http://campusorgs.uci.edu/>

Study Abroad Center

The Study Abroad Center includes the Education Abroad Program (EAP) and the International Opportunities Program (IOP). Study Abroad Center is a comprehensive resource and counseling center which helps students take advantage of the many worldwide opportunities that exist for study, work, internship, volunteering, research, and non-credentialed teaching which relates to their degree programs at UCI.

Professional staff and international peer advisors, who have returned from an IOP or EAP experience, are available to guide students in making appropriate choices of international programs for their educational goals. Group and individual advising is available as well as information sessions for their various programs.

Please refer to the EAP/IOP Preparation Guidelines in the next section.

Monday – Friday

9:00 A.M. – 4:00 P.M.

1100 Student Services II

(across Ring Road from the UCI Bookstore)

☎ Phone: (949) 824-6343

☎ Fax: (949) 824-9133

✉ E-mail: studyabroad@uci.edu

🌐 www.studyabroad.uci.edu



EAP/IOP Preparation Guide



Education Abroad Program (EAP)

1. Visit the Study Abroad Center and explore their website.
2. Consult EAP course catalog:
<https://myeap.eap.ucop.edu/Galileo/service/coursecatalog/Coursecatalog.aspx>
3. Collect course descriptions and syllabi of courses you are hoping to take.
4. **OPTIONAL:** Make an appointment with a study abroad advisor in our office to review your courses. The appointment is option, however, if you would like the courses reviewed, you may also email our office at socsci@uci.edu.



International Opportunities Program (IOP)

1. Contact the Study Abroad Center for information regarding IOP and the IOP Academic Planning Tool online.
2. Complete the online IOP Academic Planning Tool with all courses you may take while abroad.
3. This will be reviewed by the Study Abroad Center, as well as our office online for a preliminary evaluation. The Office of Admissions determines if courses are UC-transferable for units.

Make sure to bring back the course syllabi for all courses taken abroad. Once the transcripts have been processed, please call (949) 824-6803 to schedule an appointment for the final evaluation with the Social Sciences Undergraduate Student Affairs.

EAP/IOP (*Preparing to Study Abroad in the Junior Year*)

The schedule listed below consists of courses we recommend students complete by the end of their sophomore year, if they are considering studying abroad in their junior year. This is NOT a complete list of courses students should take each year but the minimum courses necessary to continue making normal progress. Students should refer to the General Education and major specific information or the General Catalogue to find additional courses to take. Students take an average of 16 units a quarter.

After choosing a specific study abroad program, the SSUSA assists students in evaluating the coursework taken abroad (*please see the following table*).

Major	Freshman	Sophomore
Anthropology	<ul style="list-style-type: none"> • Lower division writing (GE Category I) • Anth. 2A • Anth. 2B, 2C, or 2D • Soc. Sci. 3A 	<ul style="list-style-type: none"> • Anth. 30A or 30B • Anth. 10ABC or Soc. Sci. 10ABC
Chicano/Latino Studies	<ul style="list-style-type: none"> • Lower division writing (GE Category I) • Chicano/Latino Studies 61, 62, and 63 • Soc. Sci. 3A 	<ul style="list-style-type: none"> • Soc. Sci. 10ABC • Spanish 2A
Economics/Business Economics	<ul style="list-style-type: none"> • Lower division writing (GE Category I) • Econ. 20A and 20B • Math 2A, 2B, and 4 	<ul style="list-style-type: none"> • Econ. 100ABC • Econ. 15A-15B, 122A
Quantitative Economics	<ul style="list-style-type: none"> • Lower division writing (GE Category I) • Econ. 20A and 20B • Math 2A, 2B, 4, and 3A 	<ul style="list-style-type: none"> • Econ. 105ABC • Stats. 120ABC
International Studies	<ul style="list-style-type: none"> • Lower division writing (GE Category I) • Intl Stu 11, 13 and 14 • Soc. Sci. 3A 	<ul style="list-style-type: none"> • Soc. Sci. 10ABC • Language other than English up to 2B level
Political Science	<ul style="list-style-type: none"> • Lower division writing (GE Category I) • Lower division Political Science (2 or 3 courses) • Soc. Sci. 3A 	<ul style="list-style-type: none"> • Soc. Sci. 10ABC • Lower division Political Science (2 or 3 courses)
Psychology	<ul style="list-style-type: none"> • Lower division writing (GE Category I) • Psychology 9A, 9B, and 9C • Soc. Sci. 3A or equivalent 	<ul style="list-style-type: none"> • Soc. Sci. 10ABC or Math 2A-B and Stats 7
Sociology	<ul style="list-style-type: none"> • Lower division writing (GE Category I) • Sociology 1 • Sociology 2 or 3 • Soc. Sci. 3A 	<ul style="list-style-type: none"> • Sociology 10ABC or Soc. Sci. 10ABC
Social Policy & Public Service	<ul style="list-style-type: none"> • Lower division writing (GE Category I) • Soc. Sci. 1A, 2A, and 3A 	<ul style="list-style-type: none"> • Soc. Sci. 10ABC

UCDC / UC Sacramento Academic Internship Programs

The UCDC Academic Internship Program is offered during the Fall, Winter, and Spring quarters. Students who intern in D.C. during the academic year combine internships with coursework or field research as full-time students. Financial aid eligibility is maintained and may also qualify for the Presidential Scholarship. Students from all majors are encouraged to apply, Juniors and Seniors with a minimum GPA of 3.0 is recommended.

For more information on the UCDC Academic Internship Program, please visit:

www.dccenter.uci.edu

The UCDC Summer Internship Program is sponsored by UCI's Career Center. Each year, the program selects 40 to 50 outstanding UCI undergraduate students (including graduating seniors) for 10-week internships in Washington, D.C. It is an ideal vantage point for students to examine behind-the-scene activities that shape and implement our nation's future course. Students admitted into the UCDC Summer Internship Program work closely with the Coordinators and Advisors in preparation for the internship application and living experience in D.C. Students from all majors and class standing are encouraged to apply.

For additional information please visit:

<http://career.uci.edu/ucdc/>



The UCI Sacramento Internship Program provides career-related internship opportunities in public service, nonprofits, special interest groups, and various other organizations and institutions. This program is designed to immerse students into the workings of state government while showing the important role that policy makers play in decisions that will affect all of California.

For more information, please visit:

<http://career.uci.edu/sip/>

International Center (IC)

The International Center is a part of Student Life and Leadership at the University of California, Irvine. The IC staff counsels and assists international students, faculty, researchers, staff and scholars with immigration, orientation, employment and adjustment needs throughout their stay at the University of California, Irvine. In addition, the IC staff brings together international and American members of the UCI community for a variety of cultural, educational, social and recreational activities. The International Center helps visiting students, staff and scholars from other countries with any concerns that develop during their time at UCI. International students admitted to a UCI program of study and visiting international faculty, staff and scholars should address correspondence about immigration or other related concerns to the International Center.

Monday - Friday

8:00 A.M. – 5:00 P.M.

G302 UCI Student Center

☎ Phone: (949) 824-7249

📠 Fax: (949) 824-3090

✉ E-mail: internationalcenter@uci.edu

www.ic.uci.edu



Cross-Cultural Center (CCC)

The Cross-Cultural Center (CCC) is dedicated to creating and maintaining a socially just campus, fostering the cultural identities within our community and providing opportunities for intellectual exchange, leadership development, and community engagement. The CCC strives to create and maintain meaningful dialogues and interactive programs between and for all people, implement programs and services that foster a sense of social responsibility among students, and provide a network of support for students from traditionally disenfranchised communities. The CCC also aims to provide opportunities for community service and experiential learning in order to enhance the personal, social, cultural, and academic wellbeing of UCI's students.

Monday – Friday

8:00 A.M. – 5:00 P.M.

☎ Phone: (949) 824-7215

📠 Fax: (949) 824-3056

🌐 www.ccc.uci.edu

Office of the Registrar

Monday – Friday

8:00 A.M. – 5:00 P.M.

215 Aldrich Hall

☎ Phone: (949) 824-6124

📠 Fax: (949) 824-7896

✉ E-mail: registrar@uci.edu

🌐 www.reg.uci.edu

Registration (WebReg)

🌐 www.reg.uci.edu/registrar/soc/webreg.html

Schedule of Classes (WebSOC)

🌐 <http://websoc.reg.uci.edu/perl/WebSoc>

Student Access

🌐 www.reg.uci.edu/access/student/welcome/

Campus Operator

☎ Phone: (949) 824-5011

Admissions Office

Monday – Friday

8:00 A.M. – 5:00 P.M.

260 Aldrich Hall

☎ Phone: (949) 824-6703

📠 Fax: (949) 824-2951

🌐 www.admissions.uci.edu

Central Cashier

Monday – Friday

8:00 A.M. – 5:00 P.M.

228 Aldrich Hall

☎ Phone: (949) 824-6916

📠 Fax: (949) 824-3252

✉ E-mail: cashiers@uci.edu

🌐 www.fs.uci.edu/QS

🌐 <https://zotaccount.uci.edu/>

Campus Billing

Monday - Friday

8:30 A.M. – 1:00 P.M. and 2:00 P.M. - 4:30 P.M.

101 Aldrich Hall

☎ Phone: (949) 824-2455

📠 Fax: (949) 824-9807

✉ E-mail: cbs@uci.edu

🌐 www.fs.uci.edu/CBS/Cbs_home.htm

Disability Services Center

Monday – Friday

8:00 A.M. – 5:00 P.M.

100 Disability Services Center, Bldg 313

☎ Phone: (949) 824-7494

☎ TDD: (949) 824-6272

📠 Fax: (949) 824-3083

✉ E-mail: dsc@uci.edu

🌐 www.disability.uci.edu

Financial Aid Office

Monday – Friday 10:00 A.M. – 5:00 P.M.

102 Aldrich Hall

☎ Phone: (949) 824-8262

📠 Fax: (949) 824-4876

🌐 www.ofas.uci.edu

The Hill (UCI Bookstore)

Monday – Thursday (8:00 A.M. – 7:00 P.M.)

Friday (8:00 A.M. – 5:00 P.M.)

Saturday (12:00 A.M. – 5:00 P.M.)

Sunday (Closed)

210-B Student Center

☎ Phone: (949) 824-2665

✉ E-mail: books@uci.edu

🌐 www.book.uci.edu

Transportation & Distribution Services

Monday – Friday

7:30 A.M. – 4:00 P.M.

200 Public Services Building

☎ Phone: (949) 824-7275

🌐 <http://www.parking.uci.edu/>

Housing Services

Monday – Friday

8:00 A.M. – 5:00 P.M.

G465 Student Center

☎ Phone: (949) 824-7247

✉ E-mail: housing@uci.edu

🌐 www.housing.uci.edu

